



This bulletin provides a breakdown of all trauma¹ attendances at Whiston Hospital Accident and Emergency department (AED) between October 2008 and September 2009.

Figure 1 illustrates the number of trauma attendances by month of attendance. Trauma attendance peaked in June (n=3,994), with September (n=3,075) having the least number of trauma attendances.

Figure 1: Total number of trauma attendances by month, October 2008 to September 2009

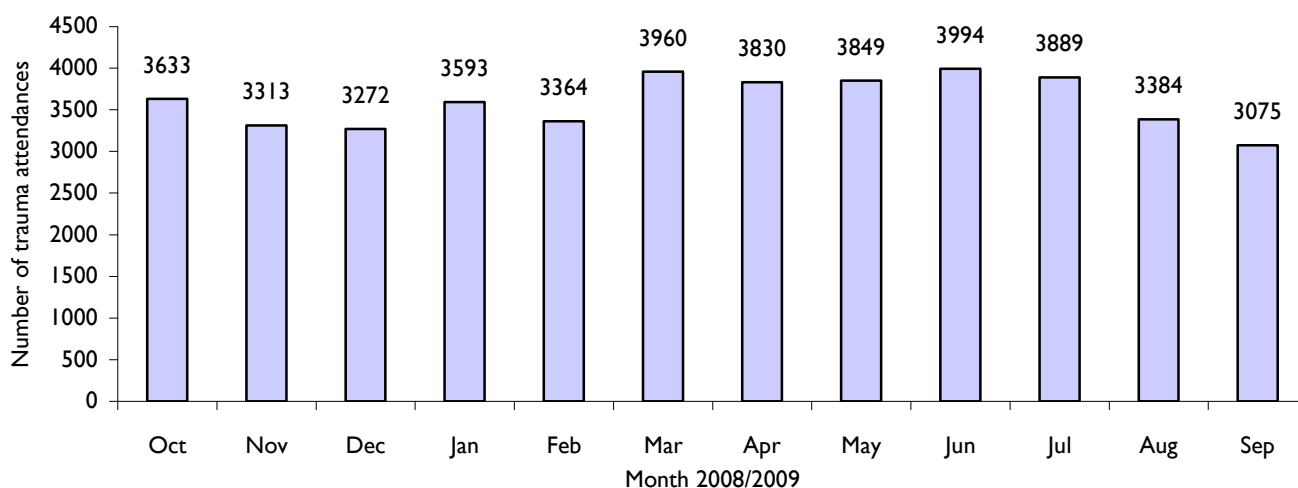


Figure 2 illustrates trauma attendances by gender. For all months there were slightly more male (51%) trauma attendances than female presenting at Whiston Hospital AED.

Figure 2: Gender of trauma attendances by month, October 2008 to September 2009

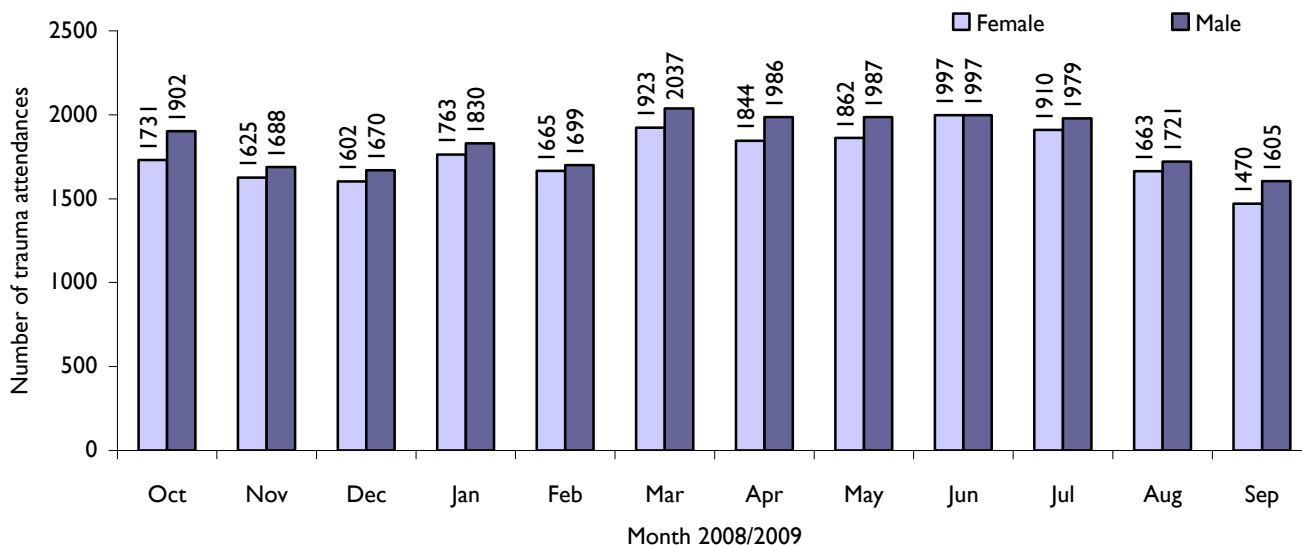
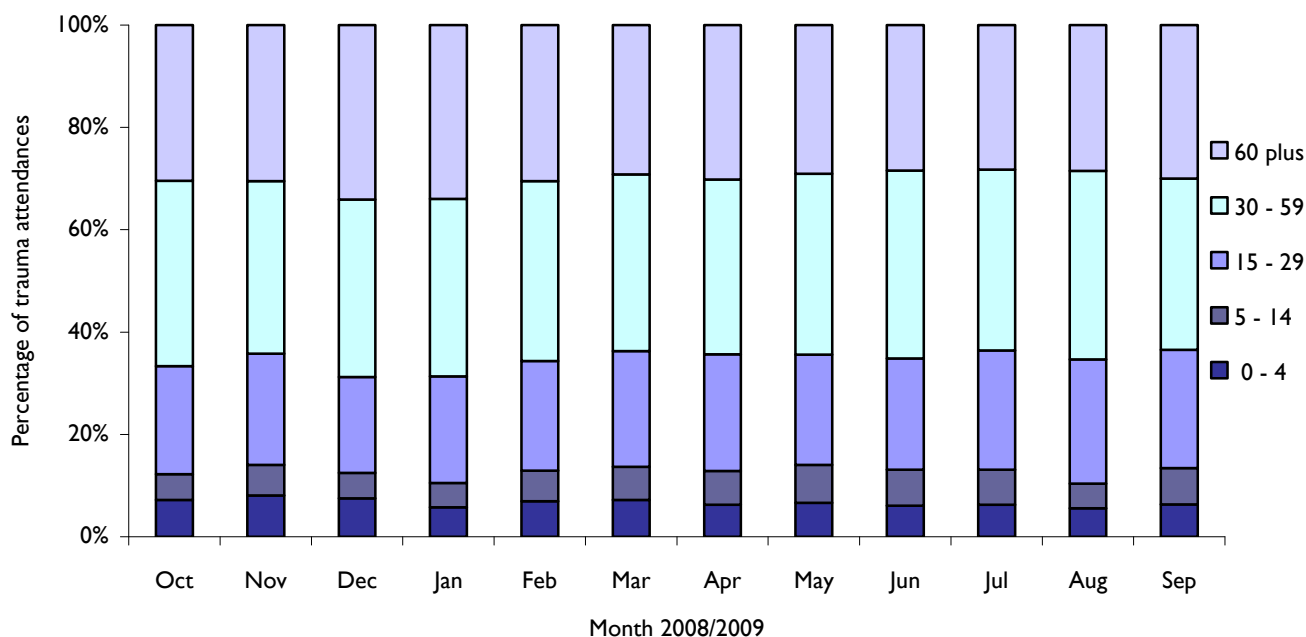


Figure 3 presents the age group of trauma attendances. Across the whole year over a third (35%) of trauma attendances were made by people aged of 30 to 59 years and 22% by 15 to 29 year olds.

Figure 3: Age group of trauma attendances by month, October 2008 to September 2009



The majority (96%) of trauma attendances to Whiston AED stated their ethnicity as white (Table 1).

Table 1: Ethnicity of all trauma attendees, October 2008 to September 2009ⁱⁱ

Ethnicity	Oct	Nov	Dec	Jan	Feb	Mar	Apr	May	Jun	Jul	Aug	Sep	Total	%
White	3481	3192	3126	3456	3238	3766	3672	3702	3821	3734	3256	2952	41396	96
Black African	59	32	48	52	42	81	57	65	77	55	43	64	675	2
Other	23	25	19	22	26	30	29	27	32	29	22	22	306	1
Unknown	12	14	22	11	21	18	13	18	15	11	12	6	173	0
Chinese	18	7	15	11	8	16	22	13	17	16	15	9	167	0
Not stated	11	11	14	16	11	18	11	10	13	12	19	5	151	0
Black Caribbean	18	11	13	10	8	13	12	12	8	16	5	7	133	0
Bangladeshi	<5	<5	<5	<5	6	5	7	<5	<5	<5	5	<5	50	0
Other Asian background	<5	6	5	7	<5	6	<5	<5	<5	<5	<5	<5	41	0
Black other	<5	<5	<5	<5	<5	5	<5	<5	<5	<5	<5	<5	26	0
Pakistani	<5	<5	<5	<5	<5	<5	<5	<5	<5	<5	<5	<5	15	0
Indian	<5	<5	<5	<5	<5	<5	<5	<5	<5	<5	<5	<5	12	0
Asian Bangladeshi	<5	<5	<5	<5	<5	<5	<5	<5	<5	<5	<5	<5	11	0
Total	3633	3313	3272	3593	3364	3960	3830	3849	3994	3889	3384	3075	43156	100

Table 2 illustrates the mode of arrival for patients presenting with trauma injuries. The primary mode of arrival for trauma attendances was private transport (56%).

Table 2: Trauma attendances by mode of arrival, October 2008 to September 2009

Mode of arrival	Oct	Nov	Dec	Jan	Feb	Mar	Apr	May	Jun	Jul	Aug	Sep	Total	%
Private transport	2046	1813	1724	1898	1869	2252	2145	2154	2280	2235	1926	1678	24020	56
Ambulance	1356	1259	1348	1450	1270	1424	1399	1464	1449	1422	1220	1182	16243	38
Public transport	146	151	96	137	131	156	172	130	154	120	123	122	1638	4
Walked in	45	47	43	47	44	67	69	62	66	69	66	48	673	2
Unknown	14	20	25	23	15	20	15	10	18	14	13	15	202	0
Police	7	9	24	24	16	17	11	17	16	15	27	17	200	0
Other	19	14	12	14	19	24	19	12	11	14	9	13	180	0
Total	3633	3313	3272	3593	3364	3960	3830	3849	3994	3889	3384	3075	43156	100

Table 3 presents trauma attendances by source of referral. Six in ten (60%) of all trauma attendances self-referred.

Table 3: Source of referral for trauma attendances, October 2008 to September 2009

Source of referral	Oct	Nov	Dec	Jan	Feb	Mar	Apr	May	Jun	Jul	Aug	Sep	Total	%
Self-referral	2158	1986	2029	2115	1895	2281	2262	2254	2357	2452	2252	1955	25996	60
GP	595	540	468	573	605	637	522	574	622	633	420	419	6608	15
Family member	440	361	343	407	452	535	522	520	510	395	368	352	5205	12
Emergency services	157	171	185	208	153	181	229	235	230	102	66	68	1985	5
Walk-in-Centre	89	75	79	93	75	97	87	97	101	79	85	95	1052	2
Other hospital	59	58	43	41	55	78	68	68	52	62	37	49	670	2
Other referrer	42	52	35	62	47	51	56	31	40	81	67	70	634	1
Carer	19	20	28	28	24	27	21	30	19	37	33	27	313	1
Employer	28	19	11	23	16	22	19	8	15	15	17	13	206	0
Educational establishment	19	17	15	20	26	15	18	11	22	6	15	8	192	0
Police	18	10	21	12	9	29	20	12	15	15	12	10	183	0
AED	<5	<5	<5	<5	<5	<5	<5	<5	<5	6	<5	<5	17	0
General dental practitioner	<5	<5	<5	<5	5	<5	<5	<5	<5	<5	<5	<5	16	0
Primary care	<5	<5	<5	<5	<5	<5	<5	<5	<5	<5	<5	<5	16	0
District nurse	<5	<5	<5	<5	<5	<5	<5	<5	<5	<5	<5	<5	14	0
Physiotherapist	<5	<5	<5	<5	<5	<5	<5	<5	<5	<5	<5	<5	13	0
Health visitor	<5	<5	<5	<5	<5	<5	<5	<5	<5	<5	<5	<5	9	0
Social services	<5	<5	<5	<5	<5	<5	<5	<5	<5	<5	<5	<5	6	0
Optician	<5	<5	<5	<5	<5	<5	<5	<5	<5	<5	<5	<5	5	0
Armed Forces	<5	<5	<5	<5	<5	<5	<5	<5	<5	<5	<5	<5	<5	0
Chiropodist	<5	<5	<5	<5	<5	<5	<5	<5	<5	<5	<5	<5	<5	0
Consultant	<5	<5	<5	<5	<5	<5	<5	<5	<5	<5	<5	<5	<5	0
Midwife	<5	<5	<5	<5	<5	<5	<5	<5	<5	<5	<5	<5	<5	0
Occupational therapist	<5	<5	<5	<5	<5	<5	<5	<5	<5	<5	<5	<5	<5	0
Orthoptist	<5	<5	<5	<5	<5	<5	<5	<5	<5	<5	<5	<5	<5	0
Prison service	<5	<5	<5	<5	<5	<5	<5	<5	<5	<5	<5	<5	<5	0
Speech therapist	<5	<5	<5	<5	<5	<5	<5	<5	<5	<5	<5	<5	<5	0
Total	3633	3313	3272	3593	3364	3960	3830	3849	3994	3889	3384	3075	43156	100

Table 4 details the injury group of trauma attendances. The most common cause of injury was by other injury (73%). Of those attendances where an injury group was specified 53% were falls and 19% were road traffic accidents.

Table 4: Trauma attendances by injury group, October 2008 to September 2009

Injury group	Oct	Nov	Dec	Jan	Feb	Mar	Apr	May	Jun	Jul	Aug	Sep	Total	%
Other injury	2663	2366	2176	2592	2520	2919	2800	2803	2949	2932	2542	2230	31492	73
Fall	491	498	667	496	413	557	539	608	539	499	443	408	6158	14
RTA	204	219	176	197	155	181	213	161	215	161	178	180	2240	5
Assault	93	71	118	103	96	89	90	91	92	92	70	76	1081	3
Sports injury	81	61	45	101	88	105	87	75	75	85	59	101	963	2
Burns and scalds	41	42	38	44	43	50	43	43	53	51	42	28	518	1
Ingestion	38	36	27	30	29	28	38	34	47	47	27	28	409	1
Deliberate self-harm	16	13	20	27	18	29	17	33	21	20	22	23	259	1
Substance abuse	<5	6	<5	<5	<5	<5	<5	<5	<5	<5	<5	<5	26	0
Firework	<5	<5	<5	<5	<5	<5	<5	<5	<5	<5	<5	<5	10	0
Total	3633	3313	3272	3593	3364	3960	3830	3849	3994	3889	3384	3075	43156	100

Table 5 shows the discharge destination of trauma attendances; over a third (34%) of attendees were discharged requiring no follow-up treatment.

Table 5: Discharge destination of all trauma attendees, October 2008 to September 2009

Discharge	Oct	Nov	Dec	Jan	Feb	Mar	Apr	May	Jun	Jul	Aug	Sep	Total	%
Discharged no follow-up	1126	960	980	1102	1071	1294	1318	1406	1465	1449	1242	1058	14471	34
Admissions	836	736	770	798	809	942	894	925	984	1012	867	714	10287	24
Emergency admissions unit	944	874	797	881	823	907	792	755	745	706	591	666	9481	22
Discharged to GP	218	203	194	262	210	235	256	237	241	206	216	190	2668	6
Did not wait	149	212	234	154	155	201	185	172	187	171	137	155	2112	5
Fracture clinic	121	85	79	120	75	113	137	109	103	122	110	87	1261	3
Other	76	69	83	75	65	80	77	70	77	77	65	79	893	2
Physiotherapy clinic	44	41	21	59	33	55	46	52	54	39	49	31	524	1
AED review clinic	35	39	37	35	53	27	37	35	36	29	31	27	421	1
Sent to other hospital	26	27	18	29	20	28	25	30	27	24	18	16	288	1
Outpatient clinic	20	22	21	31	19	31	22	19	24	8	17	13	247	1
Discharged with ear/nose/throat appointment at Whiston	14	16	22	24	15	19	20	22	21	22	27	8	230	1
Return for treatment	20	24	12	17	13	13	17	13	24	21	12	18	204	0
Sent to GP assessment unit	<5	5	<5	<5	<5	13	<5	<5	6	<5	<5	13	61	0
Discharged returning to GP clinic at Whiston AED	<5	<5	<5	<5	<5	<5	<5	<5	<5	<5	<5	<5	8	0
Total	3633	3313	3272	3593	3364	3960	3830	3849	3994	3889	3384	3075	43156	100

Published November 2009

Dan Hungerford (TIIG Analyst)

Centre for Public Health, Research Directorate, Faculty of Health and Applied Social Sciences, Liverpool John Moores University

5th Floor, Kingsway House, Liverpool, L3 2AJ

Tel: 0151 231 8724 Email: d.j.hungerford@ljmu.ac.uk

Website: www.tiig.info (please note that all data requests should be made through the TIIG website)

ⁱTrauma refers to all AED attendances presenting as a result of an intentional or unintentional injury.

ⁱⁱPlease note that all numbers less than five have been suppressed in line with patient confidentiality and if there is only one number <5 in a category then two numbers will be suppressed at the next level (e.g. <6) in order to prevent back calculations from totals.